

CINLE L-SHAPE UNITS



CINLE

Concrete Products Industries Sdn. Bhd. (216631-X)

Cinle L-Shape Units

CINLE Reinforced Concrete L-Shape Units are available in various types of loading and sizes as shown in Table 1.

Design and Specifications:-

CINLE Reinforced Concrete L-Shape Units are designed in accordance with BS 8110 and based on the following loading conditions:-

- Type A : MOT HA loading at 1.2m behind the wall.
- Type B : Surcharge of 600mm maximum behind and above the wall.

The concrete grade used shall be 40N/mm².

Cinle L-shape Units May Be Used:-

- As Open Drains with CINLE precast DWF section.
- As Retaining Walls.
- As Temporary or Permanent Storage Walls.

Advantages Of Cinle Precast L-shape Units

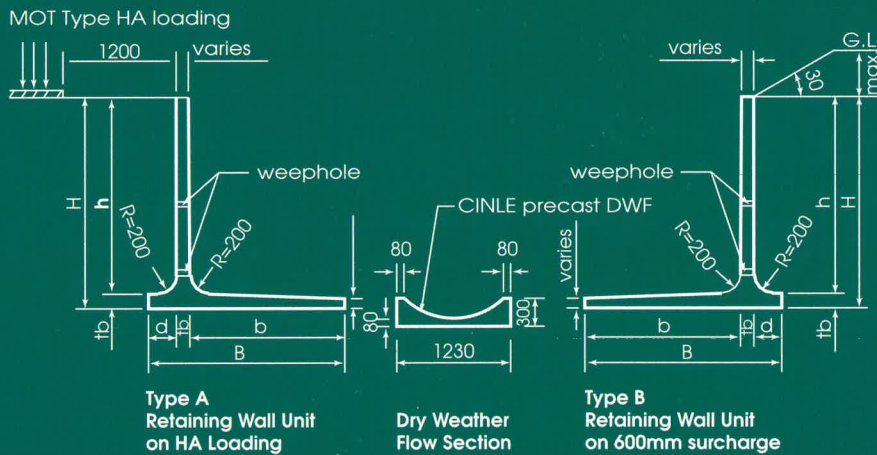
- Site will be cleaner with as all the units are cast at CINLE factories.
- Quality concrete are assured through factory controlled conditions.
- Shorter construction time.
- Assembly or dismantling can be attended to by unskilled labour.

Standard Length = 1.00m

Table 1

Standard Dimensions and Properties					
Nominal Sizes (mm)	Dimensions (mm)				Weight (tonnes)
h x b	H	B	tb	d	Per Unit
900 x 465	1050	915	150	300	0.72
1200 x 770	1350	1220	150	300	0.90
1500 x 1050	1650	1500	150	300	1.10
1800 x 1350	1950	1800	150	300	1.30
2100 x 1650	2250	2100	150	300	1.50
2400 x 1950	2550	2400	150	300	1.69
2700 x 2100	2850	2700	150	450	1.89
3000 x 2400	3150	3000	150	450	2.05
3300 x 2550	3450	3300	150	600	2.29
3600 x 2700	3825	3525	225	600	3.75
3900 x 3000	4125	3825	225	600	4.04
4200 x 3300	4425	4125	225	600	4.33

Note : Key to resist sliding to be agreed by Purchaser.



TYPICAL CROSS-SECTION
All Dimensions are in millimeters

Due to constantly improved products, specification may change without prior notice. Non standard sizes with different Loading condition can be specially designed and manufactured by CINLE.



CINLE

CONCRETE PRODUCTS INDUSTRIES SDN. BHD. (216631-X)

MAIN OFFICE / FACTORY:

Lot 1744, Block 71, Jalan Landeh Cinle, 10th Mile, Kota Padawan,
93250 Kuching, Sarawak.
P.O. Box 2263, 93746 Kuching, Sarawak, Malaysia.
Tel: 082-611235, 627588, 628588, 629588 Fax: 082-628288
Email: ccpi@cinle.my

BRANCH OFFICE :

1st Floor, Lot 857, Tabuan Jaya Commercial Centre,
93350 Kuching, Sarawak.
Tel: 082-368523, 369523